

EuropeLIFT

optimized reaching

TM15 GT



- Working height: 15,6 m
- Horizontal Outreach: 8,1 m (220 kg)
- Articulated telescopic boom
- Fly-jib 1,3 m
- Standard Platform Rotator
- Compact transport dimensions
- Auto chassis level (optional)

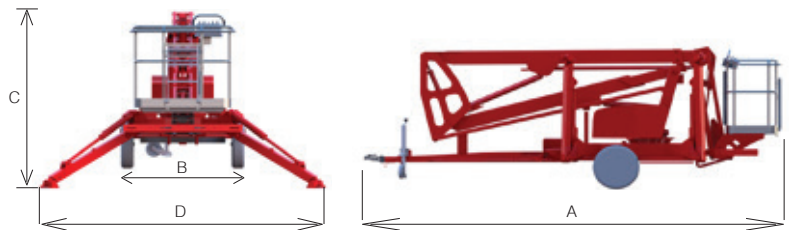


TRAILER-MOUNTED BOOMLIFT

EuropeLIFT

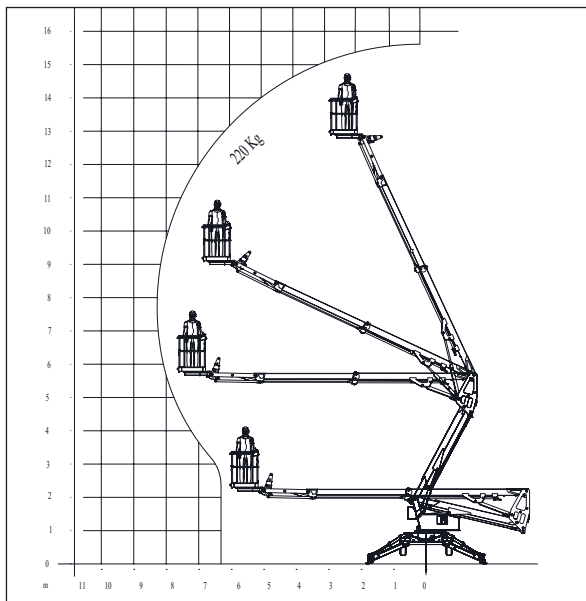
TYP: TM 15 GT

Specifications	TM 15 GT
Working Height	15.6 m
Platform Height	13.6 m
Horizontal Reach(220kg)	8.1 m
Platform Capacity	220 kg
Slewing	355°
Flyjib	1.3 m
Platform dimensions	1.2x0.8x1.1 m
Platform rotator	2x45°
Transport length (A)	ca. 6.2 m
Transport width (B)	1.64 m
Transport height	ca. 2.05 m
Total weight: (230V, Honda, wheel assist)	1850 kg
Total weight: (battery 24VDC, wheel assist)	1850 kg
Outrigger footprint (D) Outrigger plate outer edge	3.7 m
Gradeability	8%
Max. towing speed	80 km/h
Brake	Overrun Brakes with Gas Spring
Tyres	215 R 14 C



STANDARD FEATURES

- Articulated telescopic boom with flyjib
- 1,3m Flyjib
- Auto platform level with 3 auto adjust
- Alu basket with hand guard rail and tool tray
- Proportional electro-hydraulic controls by fingertip joysticks
- Ground and platform controls
- Ground pressure sensors on all outrigger plates with audible and visible alarms
- Chassis level sensor 1° with accoustic alarm
- Hourmeter
- 230 V outlet in the basket
- Manual recovery with hand pump
- Platform rotator
- Colour of the machine: RAL3002 (red).



OPTIONS

- Auto chassis level
- Custom colour
- Dual-Power source 230 V & Honda
- Batterie Power 24V 225Ah
- On-board 230V Generator 5KV Honda EM5500
- Fiberglass basket
- Outrigger plates

Manufacturer: EuropeLIFT Kft.
Adresse: H-8992 Bagod, Gépállomás Street. 9.
Tel: +36 20 9474 767
Internet: www.europelift.com
E-mail: europelift@t-online.hu

Distributed by: